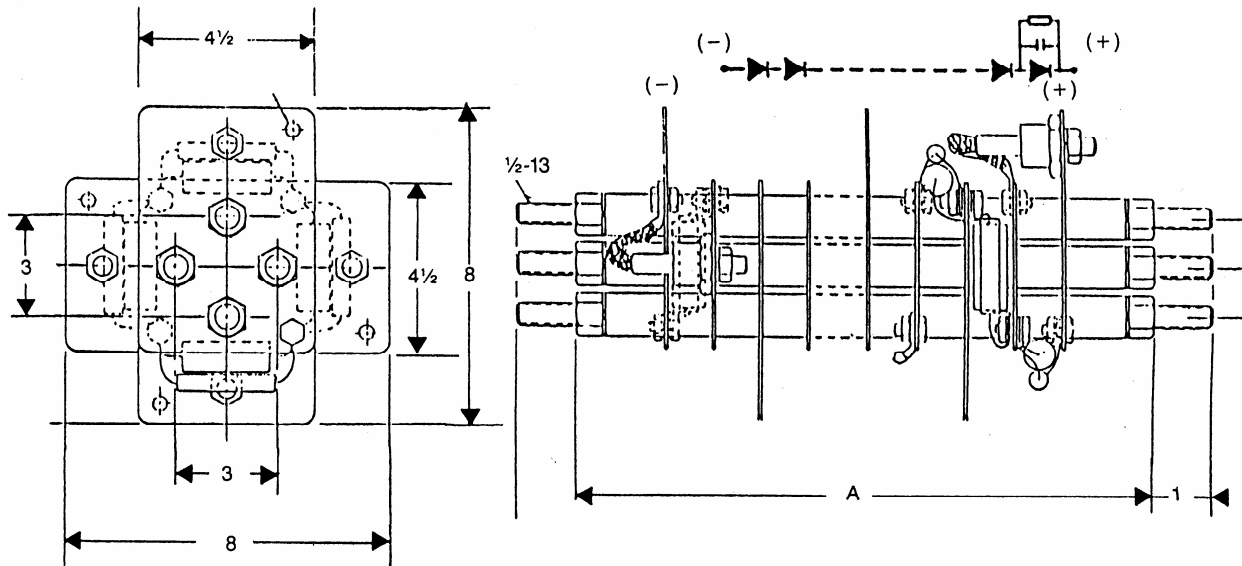
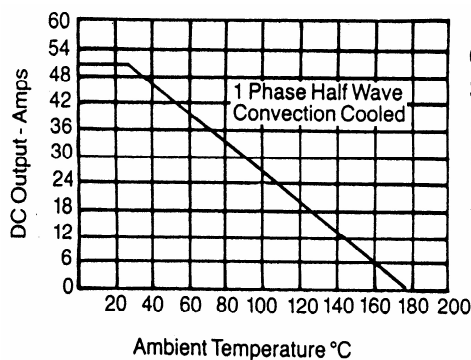


SERIES G6H1

Silicon High Voltage Assembly



| PIV (KV) | A IN | PART NO. | I _s AMPS |
|----------|--------|----------|---------------------|
| 8 | 10.125 | 8G6H1 | 1800 |
| 12 | 13.625 | 12G6H1 | |
| 16 | 17.125 | 16G6H1 | |
| 20 | 20.625 | 20G6H1 | |
| 24 | 24.125 | 24G6H1 | |
| 28 | 27.625 | 28G6H1 | |
| 32 | 31.125 | 32G6H1 | |



CIRCUIT
SURGE CURRENT
PRV
DC OUTPUT

SINGLE PHASE HALF WAVE
SINGLE CYCLE SEE I_s
SEE TABLE
SEE CURVES

(203) 467-2591 TEL
(203) 469-5928 FAX
Email: Info@edal.com
Internet: <http://www.edal.com>