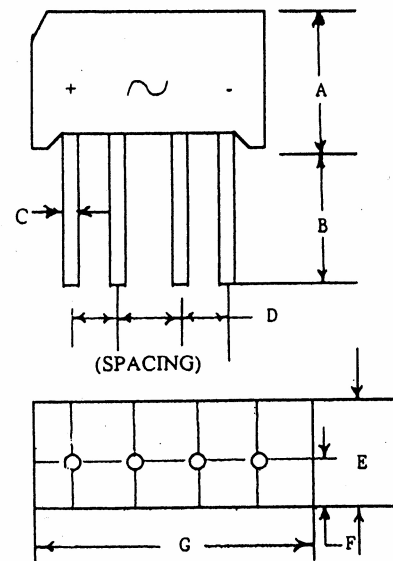


## Silicon Bridge Rectifier

DIM.	INCHES		MILLIMETER	
	MIN.	MAX.	MIN.	MAX.
A	0.420	0.460	10.7	11.7
B	.050		12.7	
C	0.028	0.034	0.76	0.86
D	0.14	0.16	3.60	4.10
E	0.180	0.20	4.6	5.1
F	0.039	0.055	1.0	1.4
G	.560	.600	14.2	15.2

**ELECTRICAL RATINGS**

MAXIMUM AVERAGE CURRENT

SINGLE PHASE FULL WAVE @ 55° C I<sub>o</sub>

1.5 AMPS

MAXIMUM SINGLE CYCLE SURGE  
CURRENT (IFSM)

60 AMPS

MAXIMUM FORWARD VOLTAGE DROP @ 25° C  
@ I<sub>o</sub> AMPS V<sub>F</sub> VOLTS (PER SECTION)

1.0 VOLTS

MAXIMUM REVERSE CURRENT @ PIV @ 25° C  
@PIV @ 100°C

10 uA

.5 mA

<u>PART NUMBER</u>	<u>PIV</u>
B285-5-1	50
B285-10-1	100
B285-20-1	200
B285-40-1	400
B285-60-1	600
B285-80-1	800
B285-100-1	1000
B285-120-1	1200

(203) 467-2591 TEL

(203) 469-5928 FAX

Email: Info@ edal.com

Internet: <http://www.edal.com>***EDAL industries, inc.***

51 Commerce St. East Haven, CT 06512