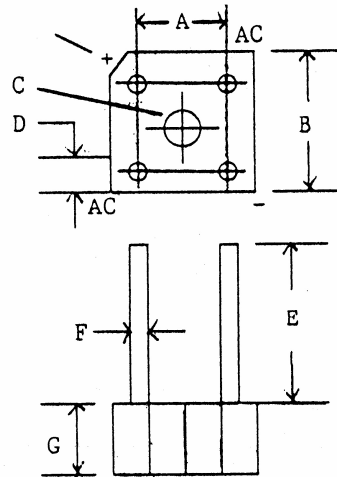


## Silicon Bridge Rectifier

DIM.	INCHES		MILLIMETER	
	MIN.	MAX.	MIN.	MAX.
A	0.405	0.445	10.5	11.3
B	0.58	0.62	14.7	15.75
C	0.142	0.158	3.6	4.0
D	0.047	0.127	1.2	3.2
E	0.75		19.1	
F	0.038	0.042	0.97	1.1
G	0.23	0.27	5.8	6.9

**ELECTRICAL RATINGS**

MAXIMUM FORWARD CURRENT

SINGLE PHASE FULL WAVE @ 55° C I<sub>o</sub> AMPS

6.0 AMPS

MAXIMUM SINGLE CYCLE SURGE CURRENT

200 AMPS

MAXIMUM FORWARD VOLTAGE DROP @ 25° C

I<sub>o</sub> AMPS (FULL WAVE)

6.0

V VOLTS (PER SECTION)

1.0

MAXIMUM REVERSE CURRENT @ PIV @ 25° C

10 uA

<u>PART NUMBER</u>	<u>PIV</u>
B191-5-1	50
B191-10-1	100
B191-20-1	200
B191-30-1	300
B191-40-1	400
B191-50-1	500
B191-60-1	600
B191-70-1	700
B191-80-1	800
B191-100-1	1000
B191-120-1	1200

(203) 467-2591 TEL

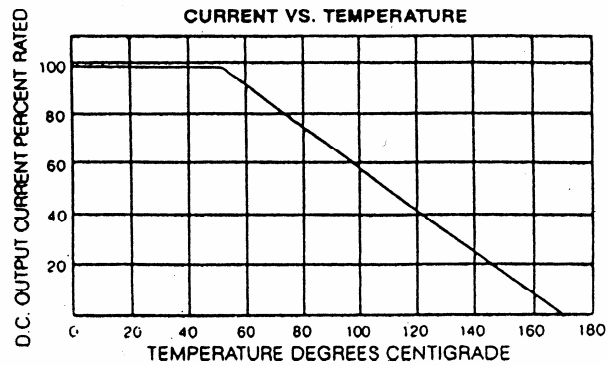
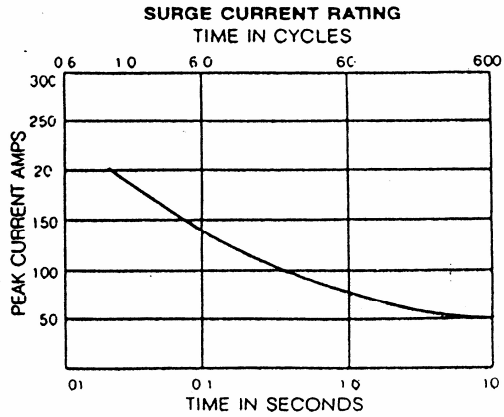
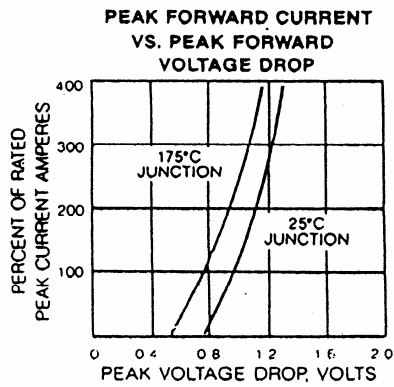
(203) 469-5928 FAX

Email: Info@ edal.com

Internet: <http://www.edal.com>**EDAL industries, inc.**

51 Commerce St. East Haven, CT 06512

# Medium Current Curves



(203) 467-2591 TEL  
 (203) 469-5928 FAX  
 Email: Info@edal.com  
 Internet: <http://www.edal.com>

***EDAL*** industries, inc.  
 51 Commerce St. East Haven, CT 06512